

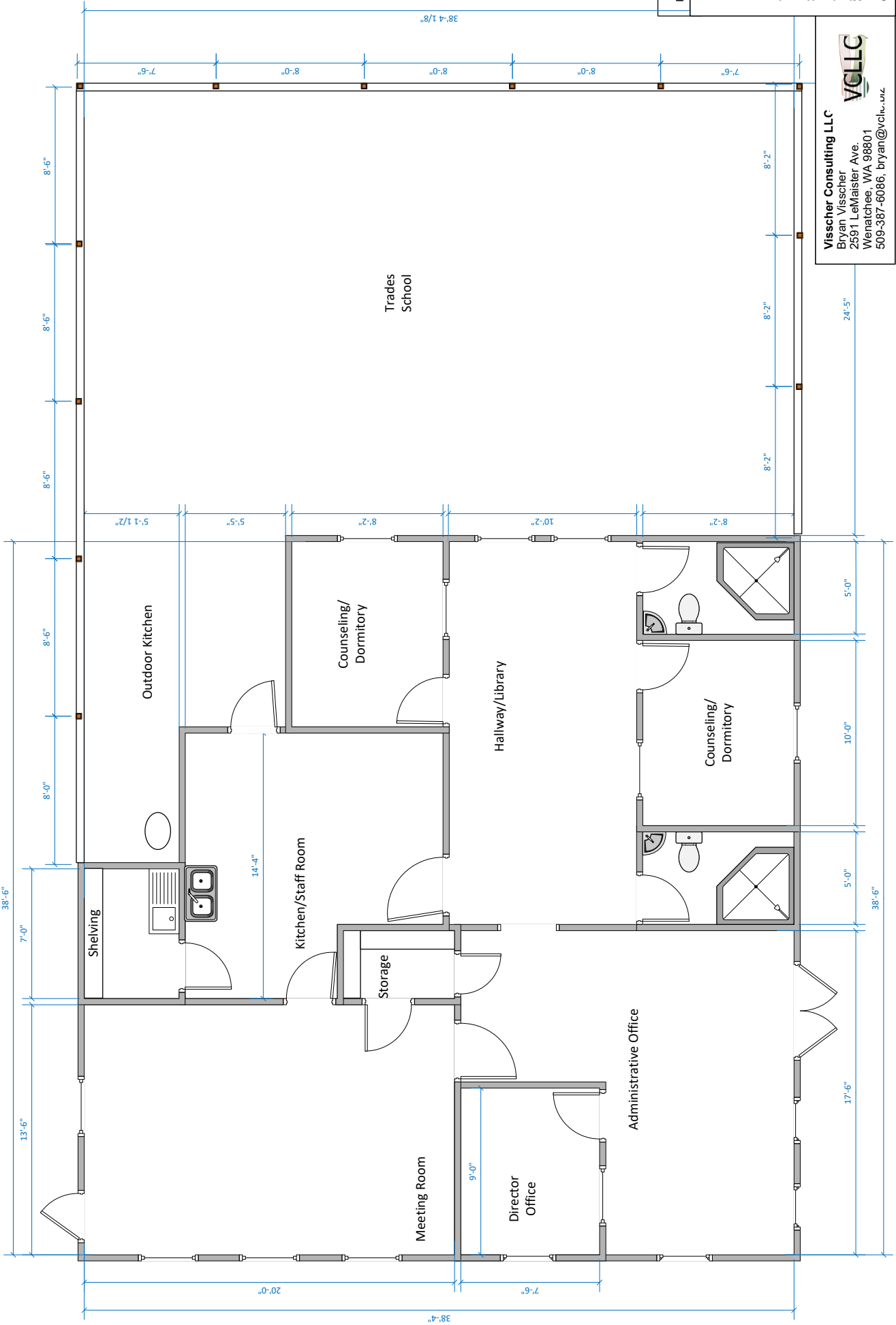
**Notes:**

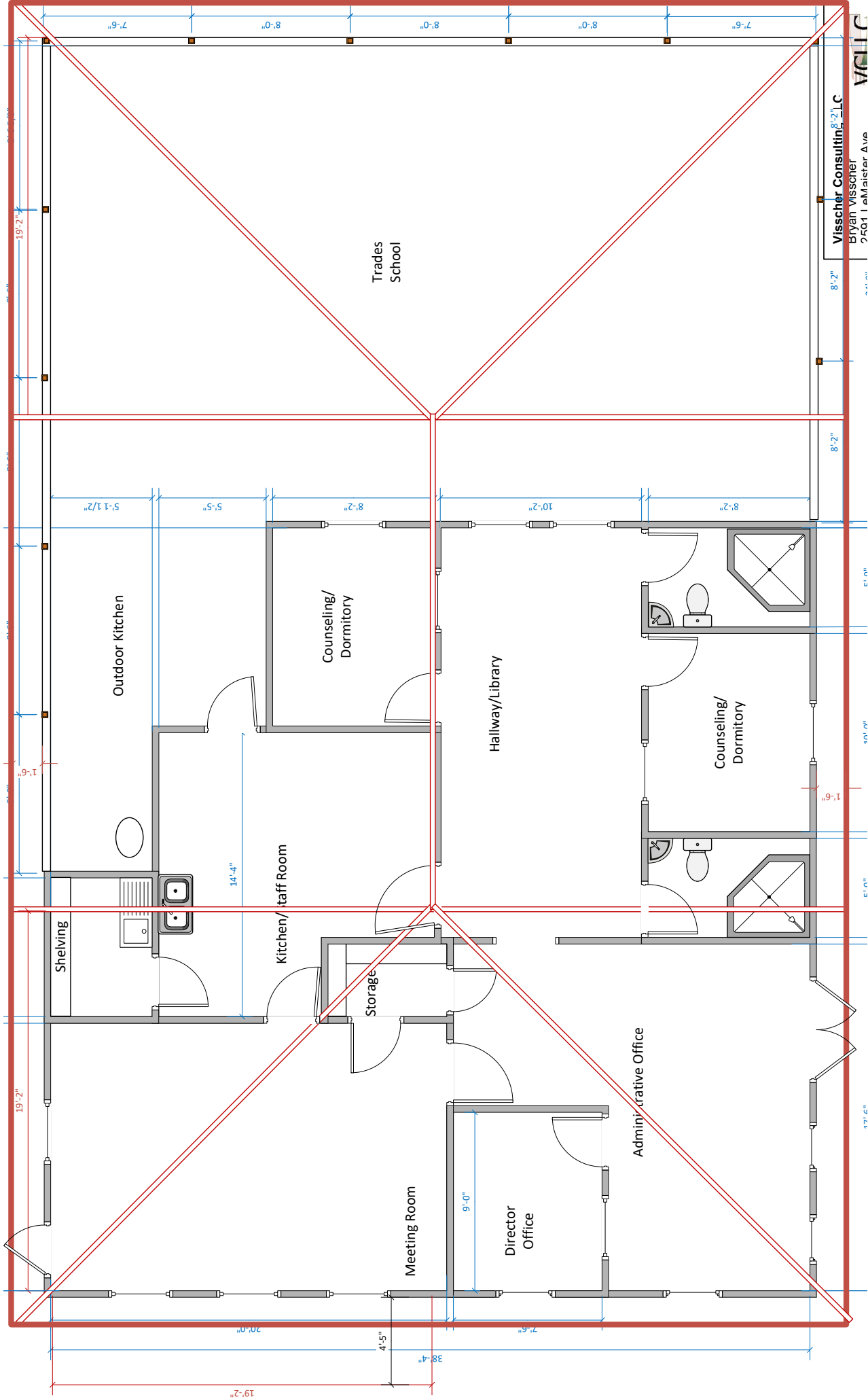
- Foundation -- Concrete foundation and slab per local best practices.
- Exterior Walls -- Clay 6 x 9 brick formed and fired on site laid up for 9" thick walls. Local best practices for structural integrity.
- Interior Walls -- Clay brick typical, laid up for 6" thick walls.
- Roof Structure -- Dimensional lumber field assembled trusses, local best practices. Connection of webbing to upper and lower members with plywood gussets and six to eight nails each side.
- 6/12 Pitch.
- Corrugated Steel Roofing System.
- Wall Finishes -- Plaster Covering inside and out.
- Interior Plumbing:
  - Standard water closet toilets with seats
  - Instant hot water electric heater at each shower.
  - Shower with enclosed floor and dedicated drain
  - Kitchen double stainless steel sink.
  - Small propane water tank to serve custodial and kitchen sinks in custodial storage.
  - Custodial fiberglass or porcelain sink large enough and with goose-neck faucet for mops and buckets.
  - Underground plumbing per local best practices to onsite sanitary infiltration system constructed per local best practices underground to side of building.
  - Rainwater capture system to ground-level poly- storage tank with pump to ab elevated water tank.
- Electricity
  - Backup underground well for supplementary water.
  - Perimeter protection taste and sediment water filter.
  - Research potential of UV light anti-microbial.
- Propane
  - Solar panel primary system on roof.
  - Solar battery and solar controller in metal cabinet in central storage room.
  - Connection to electrical grid as backup power.
- Propane
  - Small propane tank and piping for gas stove and gas fired hot water tank.

**Vischer Consulting LLC**  
 Bryan Vischer  
 2591 LeMaister Ave.  
 Wenatchee, WA 98801  
 509-387-6086, bryan@vcllc.wa.us



**VCLLC**  
 Visscher Consulting LLC  
 Bryan Visscher  
 2591 LeMaister Ave.  
 Wenatchee, WA 98801  
 509-387-6086, bryan@vcllc.wa.us





**VSSC**  
**Visscher Consulting, LLC**  
 Bryan Visscher  
 2501 I amMaier Ave

100'-0"

Outside Pit Lav

Storage

